



EST. 1770



# PENNSBURY TOWNSHIP

TOWNSHIP NEWSLETTER • SPRING / SUMMER 2021 • VOL. 23 Nº 1

## Road Department News

The township roads for 2021 that will be oiled and chipped are Fairville Road, the entire length in our township and Brintons Bridge Road from Rt 1 to Route 926. This work will be scheduled for the summer. Please do not plant or place boulders/rocks in the township right of way. This creates a hazard as well as if the township needs to work in that area, the plantings/trees may have to be removed. TREES alongside the road – the township does not own any trees. They belong to the property owner and is their responsibility. The Township's responsibility is to open of the road if a tree falls into it. We will clear the road and clean up as much as possible. If the tree has wires in it, PECO must first come out before the road crew can do anything.

## Driveway Permits

Residents must obtain a permit for "resurfacing" of driveways that exit onto a township road. Every year we have paving companies come into the township and resurface a number of driveways together WITHOUT permits. As homeowners it is your responsibility to obtain the permit. Please call Dave Allen, Road Master, 610-388-9180 with any questions. He can be helpful in evaluating the proposal. Once a job is finished, it is difficult to get the paving contractor to return to remedy any issues.

## Restoration of 18th Century Historic Home in Pennsbury

**P**ennsbury Township is partnering with the Pennsbury Land Trust to stabilize, restore and eventually showcase the historic home on township property. The historic home is located near the township municipal building on Route 1, and dates back roughly to the late 18th century, possibly as early as the Revolutionary War.

It became township property when, after years of effort by residents to protect the surrounding land upon which it sits from dense development, the township acted to acquire and protect the land in perpetuity. The Pennsbury Land Trust, a local nonprofit organization with a mission to help protect the environmental and historic resources of Pennsbury, has agreed to fund the first of three stages of the restoration project. Holly Manzone, President of the Pennsbury Land Trust, said "The Pennsbury Land Trust is pleased to partner with the Township in this rare opportunity to preserve a valuable historic resource and protect the beauty of the township."

The plan to stabilize and restore the home will be coordinated with the services of John Milner Architects, of Pennsbury. Aaron McIntyre, chairman of the Pennsbury Board of Supervisors, said that the restoration and showcasing of the historic structure will serve to "exemplify Pennsbury's place in the nation's history and Pennsbury's commitment to the preservation of its resources, and also improve the appearance of township property along Rt 1. We appreciate the Pennsbury Land Trust's interest and help with the project."

Residents may remember the historic home as the free standing antique shop adjacent to the Township building. •





## Restrictions on Open Burning

Pennsbury Township discourages open burning, but if you must the following restrictions apply. Zoning Ordinance 162-1911, sets strict limitations on open burning.

- Open burning of anything other than leaves and small branches is strictly prohibited at all times. There shall be no emission of smoke, ash, dust, fumes, vapors, gases, or other matter toxic or noxious to air which violates the Pennsylvania Air Pollution Control Laws.
- Open burning of leaves and small branches is prohibited during the following intervals:
  - » On weekends and Holidays at any time
  - » On weekdays between 4:00 PM and 9:00 AM
- Therefore, open burning of leaves and small branches may only be legally conducted during weekdays from 9:00 AM to 4:00 PM at which time the fire shall be fully extinguished.
- Before any legal open burning is conducted, the Longwood Fire Company must be informed and the fire must comply with all fire department requirements. Approval by Longwood Fire Co is necessary, but not sufficient. The Township regulations must be adhered to regardless of Longwood Fire Co approval.
- Also, Township notices regarding leaf and branch pickup carry the underlying ordinance restriction regarding open burning.
- Please be good neighbors and comply with the Township open burning regulations.

## It is with much sadness

that the Township announces our long time newsletter volunteer Sallie Corbishley passed away last Fall. She loved doing the newsletter and wanted to stay connected to the township once she and her husband Bill moved to the shore. She is sorely missed.

## Planning Commission Update

*The following is an update of the Planning Commission's main activities since the last edition of the Pennsbury Township News.*

**F**or the past several months, Planning Commission (PC) meetings have been held virtually on GoToMeeting. We will continue to assess this situation and plan to return to in-person meetings when that can be safely done.

A ground-mounted solar panel application was reviewed and the PC voted to recommend approval with the conditions that neighbors accept and PECO approves the installation. There was a rooftop solar panel application that was reviewed during two PC meetings. The PC did not recommend approval to the supervisors.

The Reese's Zoning Hearing Board application for an impervious coverage variance in order to construct an addition to their garage was reviewed with the PC voting to recommend a neutral position to the supervisors.

As previously reported, the PC continued its review of the township's solar ordinance and discussion of possible amendments. This review is being led by PC member, Mike Clements. The township recently secured consulting assistance from the Brandywine Conservancy.

The PC completed its review of the Hall's final plan for a four lot subdivision voting to recommend approval subject to specified conditions.

## Bits and Pieces

**During these COVID times, our 54 acre park located behind the township building on Route 1 has gotten a lot of attention.** It's great to see people hiking, walking their dog and just enjoying the outdoors. A dog park is located on the eastern boundary. Please remember that dogs **MUST BE ON LEASH** when walking in the park or going to the dog park area. Complaints have been received about dogs running loose and not everyone is comfortable with dogs approaching them. Please obey the rules posted and do enjoy this wonderful space. Spring is here!

During its 2021 organizational meeting, the PC elected officers and made appointments as follows: Chair – Dennis Smith, Vice Chair – Corinne Murphy, Secretary – Jeff Streitel, PC Representative to the Historic Commission – Lynn Luft, Pennsbury Township's representative on the Brandywine Battlefield Task Force – Judi Wilson.

A virtual joint planning meeting between the supervisors and PC members was held on February 18 to discuss planning for 2021.

The Adams' reverse subdivision plan combining two lots currently owned by the Adams into one parcel was reviewed with the PC voting to recommend approval.

A valued member for twelve years, Jim Ware retired from the PC at the end of the year. We are appreciative of Jim's service to the township and his many contributions. Thank you Jim!

All township residents are welcome to attend Planning Commission meetings which are scheduled for the fourth Tuesday of the month at 5:30 PM virtually via GoToMeeting or at the Township Building. •

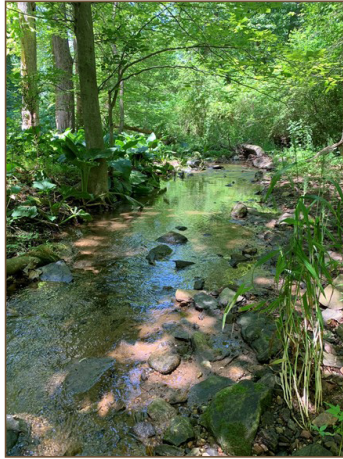
## The 2020 audit of township records has been completed

by Barbacane Thornton CPA firm. Township tax remains at 1.49 mils and has not changed for many years. The earned income tax rate is the same at .312% and is collected by Keystone Collections. You should have received your township tax bill at the beginning of March. If you have not, please call the Tax Collector Berkheimer Assoc. 866-309-6939. The Township Budget for 2021 was adopted in December, 2020 and is posted on the township website [www.pennsbury.pa.us](http://www.pennsbury.pa.us) under township government. •



## Working Together to Plan for the Future of Bennett's Run Watershed!

The Brandywine Conservancy, in cooperation with Pennsbury Township and other planning team members, is working on a new project to protect a local stream called Bennett's Run. Located primarily in Pennsbury Township, with small portions in Kennett and East Marlborough Townships, the project includes both the stream and the land that drains into it, collectively known as the Bennett's Run watershed. Bennett's Run flows directly into the main stem of the Brandywine Creek—just below Pocopson Road—which then becomes a major source of drinking water for over 500,000 residents in southeastern Pennsylvania and northern Delaware.



*A tributary to Bennett's Run along Chandler Road*

and strategies to enhance the watershed, its resources and the lives of those who reside there.

### The Planning Team Needs Your Help

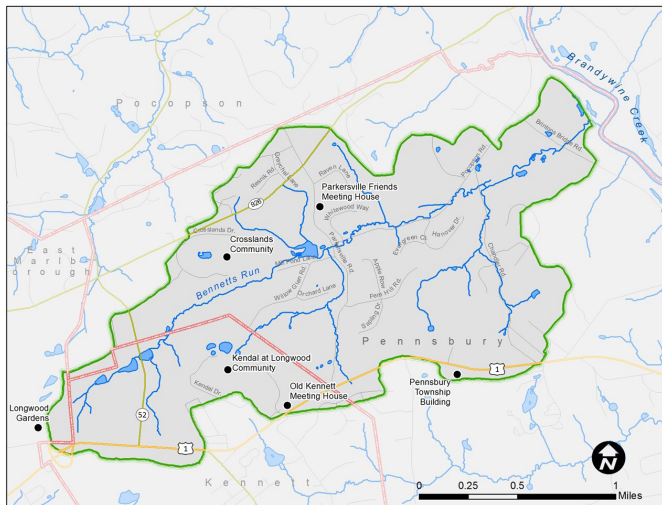
Those residents who live within the Bennett's Run Watershed (see map) are encouraged to complete a survey to help the Brandywine understand the watershed issues that concern them and how these may be addressed through this

planning effort. How landowners use and care for their property affects the long-term health of Bennett's Run and its watershed, and their feedback is critical in helping prepare a plan that adequately balances their needs and the goals of watershed stakeholders both now and into the future.

To take the survey or to learn more about the project and Bennett's Run watershed, please visit: [www.brandywine.org/bennetts-run](http://www.brandywine.org/bennetts-run)

The Bennett's Run Watershed Conservation Plan is expected to be completed in the fall of 2021, with additional opportunities for public input in the summer of 2021. •

With assistance from Stroud Water Research Center and the Brandywine Red Clay Alliance, the Brandywine Conservancy is leading efforts to create a watershed conservation plan, which will identify and prioritize actions to maintain and improve the water quality of Bennett's Run. A watershed conservation plan assesses current physical and environmental conditions in the watershed and provides recommendations



*Bennett's Run Watershed*

Scan the QR Code below with your smart phone camera for direct link to the Bennett's Run watershed community survey.



## Dumpster

**Thursday, April 22 ( 6:30 am - 2:30 pm)**

**Friday, April 23 ( 6:30 am - 2:30 pm)**

**Saturday, April 24 (9 am - 1 pm)**

Large item disposal for Pennsbury Township residents ONLY, proof of residency may be required. The dumpster will be located near the maintenance garage and will be manned by Township personnel.

NO HAZARDOUS-MATERIALS OR ELECTRONICS. The following charges will apply: (cash or check made out to Pennsbury Twp.)

\$3.00 for each car tire

\$15.00 for Truck / Tractor

\$12.00 AC / Refrigerator

## Chester County Parks & Preservation

There is a brand new website ([www.chescoparkspres.org](http://www.chescoparkspres.org)) for registering events, program and obtaining maps for regional parks and regional trails.

The system implemented is called CivicRec allowing you to search for activities, camping permits, pavilion rentals, programs, volunteer opportunities and special event permits for county parks and trails.

## Chester County Solid Waste Saturday, April 10 at the Government Services Center in West Chester

A PRE-REGISTRATION APPOINTMENT IS REQUIRED! The public can register through our webpage [www.chestercountyswa.org/121/Upcoming-Household-Hazardous-Waste-Event](http://www.chestercountyswa.org/121/Upcoming-Household-Hazardous-Waste-Event). There is also a slide show on that webpage that answers many questions about our events.

We have three more events planned in 2021, in June (Coatesville), August (Lower Oxford) and October (West Chester).



## Branch Pickup Monday - Friday, April 5 - 9

The road crew will come by only ONCE during the week so have your branches out on Monday. They will not be collected unless they are properly prepared. If you have questions call Roadmaster, Dave Allen, at 610-388-9180.

This program is for residents to get rid of fallen limbs or small trees. IT IS NOT TO BE USED AS A COMMERCIAL TREE SERVICE OR FOR LOT CLEARING .

The Township mulch pile is available for residents use. Contact Dave Allen to coordinate pickup or with questions.

### Preparation of brush and limbs:

- Brush and limbs must be from your Pennsbury Township property.
- Roots, stumps and limbs with wire and/or nails will NOT be picked up.
- All brush and limbs must be in the right of way.
- Dry, dead brush and tree limbs must be tied in bundles 3' long or less. Each bundle should be not greater than 12" in diameter.
- Fresh-cut (green) limbs, 2" in diameter and larger, should be left full length, placed along roadside with large ends closest to the road, not in a random pile.
- Only 8 bundles of brush and / or tree limbs and 10 fresh cut branches are allowed per property.

## Southern Chester County Multi-Use Trail

The draft report is being finalized and should be posted sometime in March. Please visit website [www.chescoplanning.org/transportation/SouthernChesco.cfm](http://www.chescoplanning.org/transportation/SouthernChesco.cfm) for more information and public commentary.



## Imagine a Place...

Imagine entering through the doors of the new **Kennett Library & Resource Center** that has the friendly staff and the book and video collection that we have all come to depend on but also has space for such things as first run movies, Ted Talks, lectures, town hall meetings, program areas, collaborative learning spaces and a variety of community gathering places.

That is what we as a community have to look forward to in the new building – a 110-seat auditorium; two classrooms; a multipurpose room; tutor space; an outdoor terrace and two makerspaces for creating and collaborating on a variety of projects for both adults and children.

Look for work to begin in April at the site of the new building at State and Willow streets; followed by groundbreaking in July; and the grand opening in December 2022. Together, we can build a new library that will serve all of our growing community's needs, enhance Kennett Square's streetscape and welcome friends and visitors to this wonderful place we call home.

Board of Trustees President Jeff Yetter thanks Pennsbury supervisors and other municipal officials for financially supporting this project and the vision for the Kennett Library & Resource Center. "We are creating an important resource for all residents of Southern Chester County. The Kennett Library & Resource Center will be a valued institution for generations to come," Jeff said.

For more information on plans for the new Library or make a donation, you can visit the Campaign website at [www.campaign4KennettLibrary.org](http://www.campaign4KennettLibrary.org) or reach out to Mary Hutchins at 610-444-2702 or [mary@kennettlibrary.org](mailto:mary@kennettlibrary.org). **The Time is Now for a Great Community to build a Great Library!**

### Kennett Library Update

The Kennett Library is working hard to provide library and information services to our community, with social guidelines in place. Story times and other programs are virtual, online Library card applications are available so the community can access E books and other online materials. In June the Library opened its doors for browsing, computer use or to take advantage of the quiet space for work or study. In addition, curbside pick-up is available and is a safe and easy way to get the book or video you want.

As a result of Covid, usage of Overdrive (ebooks) has increased dramatically, and Library staff has made increasing the availability of online materials a priority. In addition, Library staff have added take-home kits for children and families. Be sure to stop by and get your free project.

All Adult Literacy Program (ALP) classes are being held online and even with the loss of traditional classrooms 103 students attended classes in the fall. Classes include ESL, GED and Citizenship. In the last 24 months 24 students became U.S. citizens with the help of ALP; others continue to take the class in preparation for the citizenship interview and test. Since it began in 1979, ALP has had more than 8,500 students take advantage of its classes.

You can log on to [www.kennettlibrary.org](http://www.kennettlibrary.org) for a complete list of programs for children and adults. Join an online book group, tune in to children's story times on the Kennett Library's Facebook page and so much more.

Feel free to call the Library at 610-444-2702 for information on any of the great programs currently being offered. •





*Nation Makers by Howard Pyle depicts a scene from the battle. Barns-Brinton House*

*Chadds Ford Winery*

## Historical Commission Spring News

Even with the COVID-19 virus restrictions, the Historical Commission continued to meet virtually and in person to pursue several projects during the past year.

### Battle of Brandywine

Vice Chair Judi Wilson was responsible for coordinating efforts with the Chester County Planning Commission and Battlefield Task Force to prepare a description of the Battle of Brandywine events, which occurred in Pennsbury Township on September 11, 1777.

The early Baltimore Pike bisected Pennsbury and was known as the Great Road to Nottingham at the time. It became the route of two large columns of Hessian soldiers, who marched from Kennett Square toward the Brandywine, creating a diversionary tactic which persuaded General George Washington that the main British Crown forces would attack his troops near Chadds Ford.

The story of the Hessian advance will be engraved on a large metal marker and placed at the Barns Brinton House on Route 1 later this year in a special ceremony. Donated by the PA Sons of the Revolution and its Color Guard, the gift is one of fifteen which will be given to townships whose land lies within the Brandywine Battlefield. Each sign will tell a different part of the one day battle, which involved the largest number of troops in combat

during the entire Revolutionary War. Pennsbury Commission members chose the Barns Brinton House location, because it is a structure dating to the early eighteenth century. Highly visible from Route 1 today, the historic resource is a National Register site, owned by the Chadds Ford Historical Society and will reopen to visitors this spring. Visit [chaddsfordhistory.org](http://chaddsfordhistory.org) for more Barns Brinton House information and stay tuned for news about the marker's placement.

### Historic House Remodeling

The Commission is extremely pleased historic resource owners have not been deterred from home improvements by the Corona virus during the last year. Owners of historic properties must bring renovation plans for review by the Historical Commission if changes will occur to the exterior of a residence. This past fall and winter, two historic resource owners came to the Commission with remodeling plans for two different homes. Interestingly, both stone residences are listed as tenant houses for larger farmsteads in the 2009 Pennsbury Historic Resource Survey. They are separate parcels today and dated as earlier structures than their larger, nineteenth century farmhouse neighbors.

### Support Our Local Historic Resources

Finally, the Commission would like to encourage Pennsbury residents to support its local historic resource commercial enterprises,

especially those who depend upon the public for their existence. The Gables Restaurant and the Chadds Ford Winery are two examples of adapted historic resources on Route 1. Both were part of the extensive Brinton Farmstead in the eighteenth and nineteenth centuries. Other historic shops such as Springhouse Antiques and the Brandywine River Antiques barn, also on Route 1, are large enough to receive antique enthusiasts while maintaining socially safe distancing. The large barn dates to the Pierce family, who bought the property from the Hope family before the Battle of Brandywine. The Chadds Ford Antiques Mall, located near the Winery, is not yet fifty years old, the date for official consideration for the PA historic inventory. The Mall has two floors of collectibles, which are exhibited in separate displays, safe for independent browsing. As spring approaches and the weather warms enough to be outside, please consider a visit to some of Pennsbury's historic spots.

- Lynn Luft, Historical Commission

### Web Site Information:

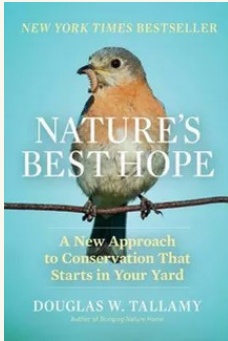
[www.thegablesatchaddsford.com](http://www.thegablesatchaddsford.com)  
[www.chaddsford.com](http://www.chaddsford.com) (Chadds Ford Winery)  
[www.Pcfantiquemall.com](http://www.Pcfantiquemall.com)  
[www.brandywineriverantiques.com](http://www.brandywineriverantiques.com)  
[www.springhousefurnishings.com](http://www.springhousefurnishings.com)  
[www.chaddsfordhistory.org](http://www.chaddsfordhistory.org) •



## Healing Our Landscape

Garlic mustard, Japanese stilt grass, Oriental bittersweet, spotted lantern flies! Alien plants, introduced pathogens, excess lawns and hardscape, degraded streams, habitat isolation and other stressors have endangered our wildlife and vital ecosystem services. While most of Pennsbury's land looks beautiful on the surface there are many ways in which we can—and should—improve its environmental quality.

In his latest book *Nature's Best Hope*, University of Delaware entomology professor Dr. Doug Tallamy offers a powerful message and realistic blueprint for counteracting these serious challenges to our landscape's health starting with our own backyards. As he explains the intricate interrelationships of the natural world, Tallamy gives homeowners practical suggestions on using native plants to support pollinators, enhancing wildlife habitats, reducing unproductive lawn, and networking with neighbors to restore our land's critical natural functions. For example, by planting native trees such as white oak rather than Asian species we can support our Carolina chickadees that need to find thousands of caterpillars just to raise one brood. Alien plants don't provide the food native wildlife populations need.



Easy to read and handsomely illustrated, *Nature's Best Hope* inspires property owners to take vital land recovery measures into their own hands. Many of the recommendations are simple and inexpensive. Let's take action to make Pennsbury's landscape the ecologically rich and healthy place it should be. Our songbirds, butterflies, current and future generations will thank you.

- Pennsbury Land Trust



## Information On Protecting Our Natural Resources

**P**ennsbury Township has a long history of protecting our natural resources. Recently, one important natural resource in particular, our trees, came to our attention in such a way that we decided it would be a good idea to share the information with all township residents to increase awareness of this matter.

From time to time, lot-owners may need to remove a tree on their property and depending on the size or complexity of the removal, the owner may decide to do the work themselves or contract with a tree service. In most situations, the decision to remove a tree is up to the good judgement of the owner. However, if the tree is large, it may fit the definition of being a “specimen” tree. The Township’s Zoning Ordinance (page 2-33) provides information on examples of specimen trees for many species that are common to our area. The metric used is diameter at breast height (DBH) which is about 4 ½ feet from the ground. The range of tree diameters shown is 20-36 inches. For specimen trees, the easiest point to be aware of is that if the DBH of the tree you are planning to remove exceeds 36 inches regardless of species, it meets the definition of a specimen tree.

Our Zoning Ordinance, section, 162-1503, paragraph C. 1 informs us that “Specimen vegetation shall not be removed from any lot or tract except where the applicant demonstrates to the satisfaction of the Board of Supervisors that such removal is essential to eliminate a hazardous condition(s) or otherwise permit lawful use of the lot or tract and where no alternative exists; where permitted, removal of specimen vegetation shall be minimized. The desire to maximize development of a lot or tract shall not be adequate justification to remove specimen vegetation.”

So, if you are thinking about taking down a large tree on your property, it is in your best interest to check with the Township Manager, Kathy Howley (610-388-7323) before you initiate the work. For your convenience, the Zoning Ordinance is available on the township website: [pennsbury.pa.us](http://pennsbury.pa.us). Please keep in mind, it is the responsibility of the property owner, not the tree service, to be aware of and abide by the township’s ordinances for protecting our natural resources. Thank you for helping. •

## Spotted Lanternfly

The Spotted Lanternfly (SLF) is an invasive pest with a strong appetite for plants like grapevines, hops, a wide range of fruit crops, and ornamental and woody trees. The SLF feeds by piercing plants stems and tree bark, thus depleting the plant's energy reserves and costing hundreds of millions of dollars annually in lost agriculture.

We all need to play a role in promoting healthy plants and fighting these invasive species to protect our community and the impact from an even broader perspective. We need to be inspecting our yards and property for the egg masses of the spotted lanternfly as they await the warm spring days ahead to hatch. Now is the time to look at trees, vehicles, patio furniture and other outdoor items for the telltale streaks of grey that are the egg masses. These egg masses need to be scraped off and squished before they become 30 to 50 new SLF per egg mass! This is especially important before you move any vehicles or items to another area or region as you will be transporting the SLF to new areas that could be infected.



Scan here for a video on how to remove spotted lanternfly eggs.



Each year the spotted lanternfly causes serious damage in trees, including oozing sap, wilting, leaf curling and tree dieback. The annual damage exceeds hundreds of millions of dollars in lost agricultural production.



Scan here to use PennState Extension's Management Resources for critical information on how to safely manage SLF.



Let's all become SLF Warriors! •

## Shredding Event Saturday, May 1 (9 am- noon)

This is FREE for Pennsbury Township residents and will be held in the Township Building parking lot. No commercial businesses.

This is an opportunity for you to shred those important documents that should not be sent to the landfill. Identity theft is everywhere so take this opportunity to dispose of sensitive items properly.

## Roadside Cleanup Saturday, April 24

This is a good project for neighborhood groups to clean up the roadside around their homes. It also is a great way for high school students to acquire community service hours. Vests, gloves and bags will be provided by the Township. Filled trash bags, if left on the roadside, will be picked up by the road crew. Call the Maintenance Garage at 610-388-9180 to leave your location and request supplies.

## Keep Your Watershed Healthy

- **Use native plants!** They require less maintenance and water and attract a variety of beneficial insects and wildlife.
- **Capture and reuse rainwater.** Besides the ecological benefits, this reduces your water bill!
- **Convert portions of your lawn to perennial gardens, wildflower meadows or woodlands.** It's the best way to attract birds and pollinators to your yard and decreases the time, energy, and fossil fuels required to mow!
- **Decrease stormwater runoff by limiting paved surfaces and managing rainwater runoff** through the use of rain gardens, rain barrels, downspout planters, and permeable paving.
- **Mow your lawn less frequently and do not mow along streambanks.** The area along streambanks is known as a "riparian buffer" and is extremely beneficial in protecting and improving water quality and wildlife habitat.
- **Wash your vehicle on grass or gravel** to allow water to slowly seep into the ground, filtering soaps and solids.
- **Make sure your vehicle is maintained to prevent fluid leaks.**
- **Use fewer chemicals** (such as synthetic fertilizers, pesticides, herbicides, fungicides, and ice melt products) and dispose of them properly.
- **Manage your woodland for long-term sustainability.** Consider having a forest stewardship plan developed for your property, minimize deer browse, and discourage invasive plants that overtake native tree saplings.
- **Clean up after your pets!**



[www.brandywine.org/conservancy/Bennetts-run](http://www.brandywine.org/conservancy/Bennetts-run)





# PENNSBURY TOWNSHIP

EST. 1770

702 Baltimore Pike  
Chadds Ford, PA 19317

**Phone:** 610-388-7323

**Fax:** 610-388-6036

**Web:** [www.pennsbury.pa.us](http://www.pennsbury.pa.us)

**Office Hours:**

Monday through Thursday:  
8:30 a.m. - 1:30 p.m.

Presorted  
Standard Mail  
U.S. Postage  
PAID  
Permit # 50  
West Chester, PA



## PENNSBURY TOWNSHIP DIRECTORY 2021

### BOARD OF SUPERVISORS

(elected 6 yr term)  
Meets 3rd Wednesday of  
every month at 7:00pm

**Wendell Fenton, Vice Chair**  
(term ends 12/23)  
610-388-6168

**Aaron McIntyre, Chair**  
(term ends 2021)  
610-388-9795

**Dan Boyle** (term ends 2026)  
484-757-9776

### TOWNSHIP STAFF

**Kathleen Howley**  
*Township Manager*  
610-388-7323

**Pat Carpenter**  
*Assistant Secretary*

**Barbara Biedekapp**  
*Financial Assistant*

### CODE ENFORCEMENT OFFICER

**Russell Drumheller**  
610-388-1790

### SOLICITOR

**Tom Oeste, Esq.**  
610-436-4400 ext. 1550

### TOWNSHIP ENGINEER

**Matthew Houtmann**  
610-565-6363

### ROAD CREW

**David Allen, Roadmaster**  
610-388-9180

Pete Laws  
Jeffrey Miller  
Patrick Yerkes

### CONSTABLE

(elected 6-year term)

**Harry McKinney**  
610-388-0240

### TOWNSHIP AUDITORS

(elected 6 year term)

**Patrick Barron**  
**Adelaide Jones**  
**Maceo Davis**

### ZONING HEARING BOARD

**Greg McCauley**  
**Ed Foley, Attorney**  
**James Porter**  
**Bill Talman**  
Alternate - Greg Williams

### VACANCY BOARD

**Robert Luft**

### PLANNING COMMISSION

Meets 4th Tuesday of every month at  
5:30pm

**Dennis Smith - Chairman**  
**Corinne Murphy-Vice Chair**  
**Jeff Streitel - Secretary**  
**Mike Clements**  
**Lynn Luft**

### SECCRA & RECYCLING

**Will Sappington**

### HISTORIC COMMISSION

**Joan Gummy**  
**Lynn Luft**  
**Eileen Mallouk**  
**Brenda Mendenhall**  
**Susan Williams**  
**Judi Wilson**  
**Russell Drumheller**

### RT 52 SCENIC BYWAY COMMITTEE

**Joe Carbonell**  
**Mary F. Short**

### KENNETT LIBRARY BOARD

**Barbara Necarsulmer**  
**Todd Bruce**

### COMPUTER ASSISTANT

**Gary Summers**

### ANIMAL CONTROL

**Brandywine Valley SPCA**  
610-692-6113

### STATE POLICE

**Avondale Barracks**  
(non emergency) 610-268-2022

### TO REPORT ROAD KILL

On U.S 1 (PennDot): 484-340-3200

All other roads (PA Game Commission):  
610-926-3136 prompt #0

### UNIONVILLE-CHADDS FORD SCHOOL DISTRICT REPRESENTATIVES, DISTRICT C

(elected 4 year term)

**John Murphy**  
**Erin Talbert**  
**Jen Brown**  
District Office: 610-347-0970

### ELECTED FEDERAL AND STATE REPRESENTATIVES

**U.S. Senators**  
**Robert P Casey**  
555 Walnut St., 1st Floor  
Harrisburg, PA 17101  
717-231-7450  
[casey.senate.gov](http://casey.senate.gov)

**Patrick J. Toomey**  
8 Penn Center, Philadelphia, PA 19103  
215-241-1090  
[toomey.senate.gov](http://toomey.senate.gov)

### U.S. House of Representatives District 6

**Chrissy Houlahan**  
709 E Gay St., West Chester, PA 19389  
610-883-5050  
[www.houlahan.house.gov](http://www.houlahan.house.gov)

**PA Senator District 9**  
**John Kane** 717-756-1548

### PA House of Representatives District 160

**Craig Williams**  
1 Beaver Valley Road  
Chadds Ford, PA 19317  
610-358-5925  
[paprep160@aol.com](mailto:paprep160@aol.com)